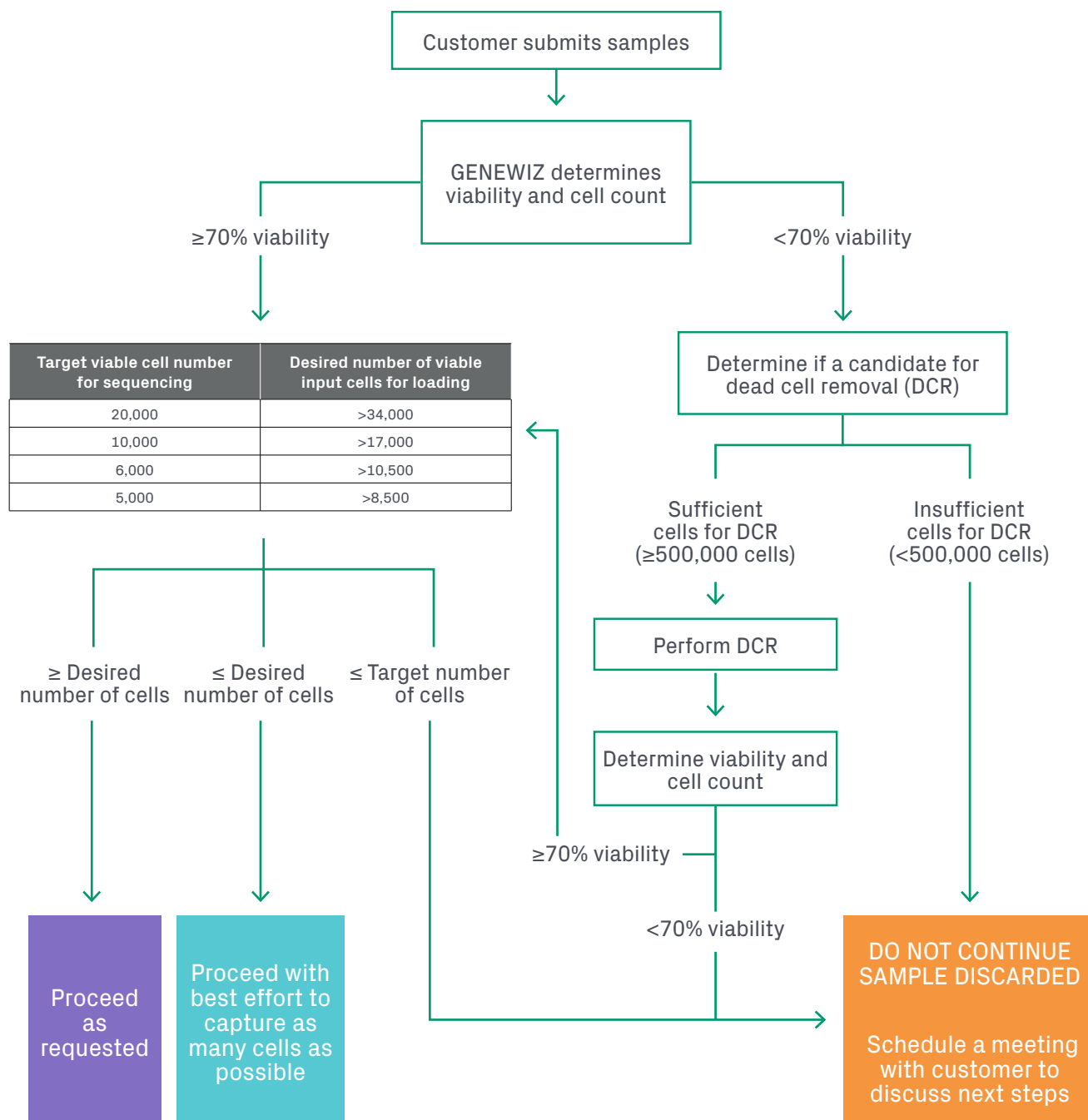
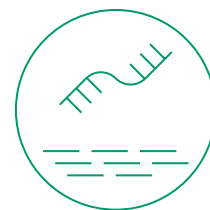


# Sample Processing Workflow for Single-Cell RNA-Seq



**Important Note:** After thawing single-cell samples for QC, all decisions must be made immediately and cannot be reversed. GENEWIZ welcomes the opportunity to discuss and align on this workflow prior to processing; please contact us at [ngs@azenta.com](mailto:ngs@azenta.com) for any questions.